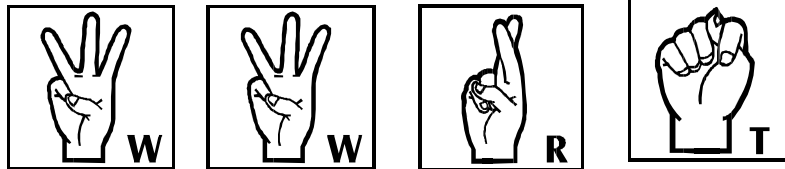


## Appendix A

### American Sign Language

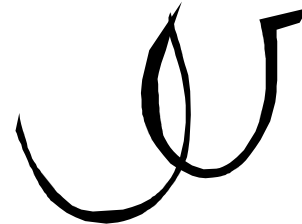


**What?**



Went Right (Success)

With both hands scroll a “W” from the mouth with the tip of each index finger.



“You” – Point to a child.



“Me” – Point to yourself.



“**Day**” - The left arm lies horizontal while the right arm is perpendicular to the left arm, with the index finger pointed. The right arm moves down resting upon the left arm (like the hand on a clock). The arms are reversed for people who are left-hand dominant.

